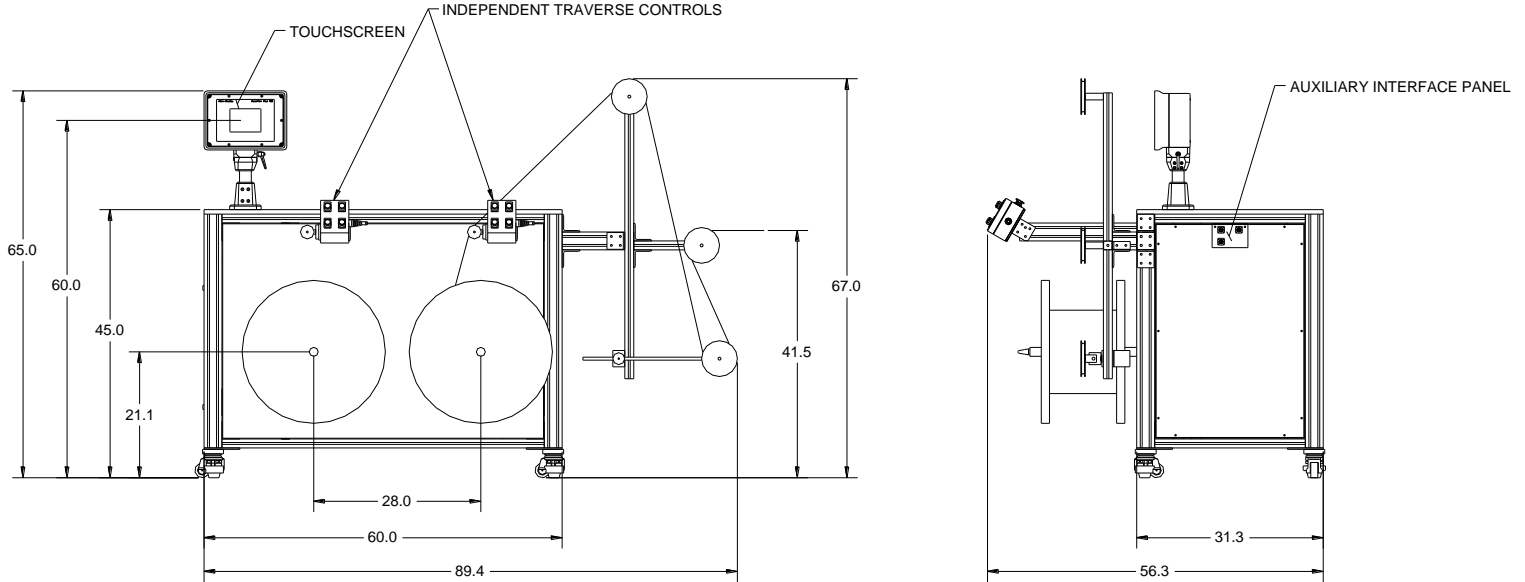


## Double Spooler Specifications



### SPECIFICATIONS:

- MATERIAL: Metal or plastic from .03" to .25" diameter
- DIMENSIONS: 90" wide, 57" deep, 67" high.
- WEIGHT: 875 pounds.
- SPEED: Linear process speed up to 300 feet/min (0 to 225 RPM spool speed).
- TAKEUP SPOOLS: Up to 24" diameter & up to 12" wide with mandrel of 1.5" dia.
- WINDING GUIDES: 12" travel with pitch linked to the rotation of the spool.
- POWER: 208 VAC/3P/20 service (16 amps full load).
- COMPLIANCE: Built to NFPA-79 and CE standards.
- SPOOL WEIGHING: Load cells in spool heads with tare feature to weigh material
- WIND TENSION: Adjustable  $\frac{1}{4}$  - 30 lb.

### FEATURES:

- Two driven spools with two independent traverse drives
  - Lighted color alphanumeric operator display with push-button data entry.
  - Machine operation parameters set through the operator interface.
  - Uses any size supply spool up to the maximum limit by changing the spool mandrel.
  - Material is guided front to back as the spool turns for a precise wrap.
  - Revised configurations and specs can be accommodated per customer requirements.
  - The operator can quickly & easily make all common setup adjustments.
  - Full and complete operator manual includes parts list and electrical schematic.
  - Accessory outlet for 110 VAC at 6 amps.
- Specifications are subject to change without notice