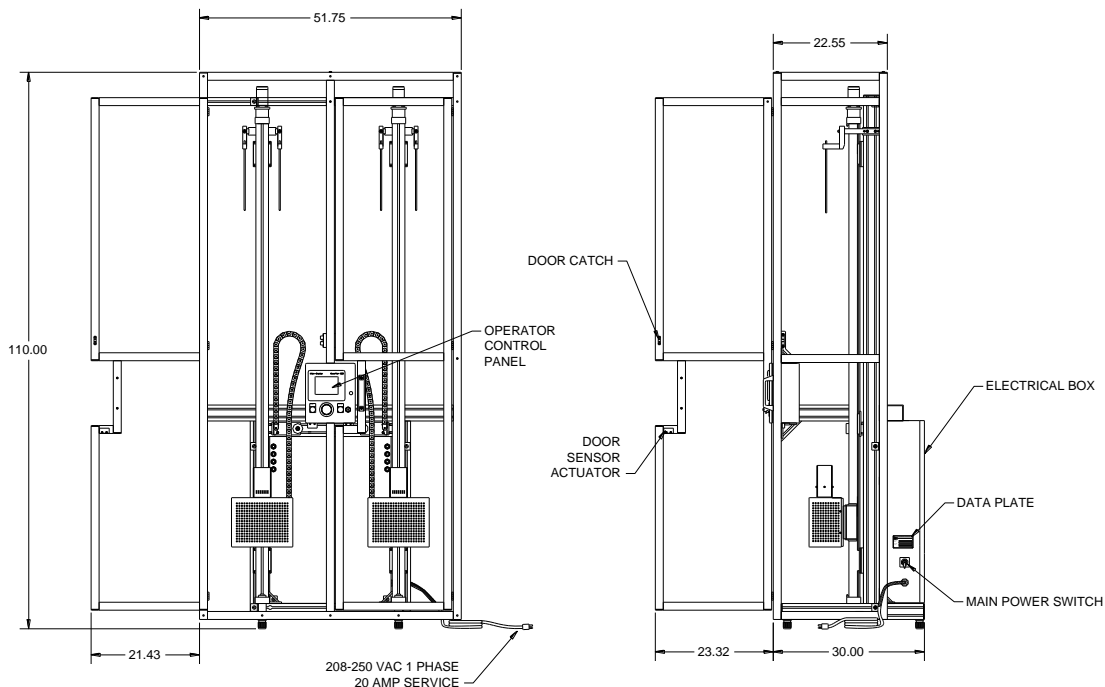


ENCLOSED 310 CATHETER LAMINATOR SPECS



1.0 FACILITIES

- 1.1 INPUT POWER- 208-240 VAC, single phase, 50/60 Hz. Full load current draw is 16A. To be installed on a 20A service with over current protection. If supplied plug is used, wire outlet for L6-20 receptacle.
- 1.2 WEIGHT- 720 lbs.
- 1.3 DIMENSIONS- 52" wide X 110" tall X 30" deep (32" with door handles). Door clearance is 24"

2.0 FUNCTIONS

- 2.1 The two vertical actuators each support a double lamination chamber assembly and moves parallel to the suspended catheter (total of 4 lamination areas).
- 2.2 Moves at a maximum rate of 6 inches per second (15.3 cm/sec).
- 2.3 Lamination chamber assemblies capable of maintaining temperature as follows.
- 2.4 Temperature control from 100 to 650 degrees F.
- 2.5 Temperature balance between each side of a given chamber controlled +/- 3° C by mixing the air through a central heater.
- 2.6 A programmable logic controller (PLC) is used to run all of the stored lamination programs.
- 2.7 A color touchscreen makes machine operation and recipe entry quick and easy.

3.0 SAFETY

This machine complies with all NFPA'79 electrical standards and meets CE safety, wiring and emissions standards. This machine is CE certified for international use.

4.0 RANGE & ACCURACY

- Minimum temperature 100 deg F
- Maximum temperature 650 deg F
- Temperature tolerance/error/accuracy +/- 5 deg F
- Minimum speed 0.1 cm/sec
- Maximum speed 12.0 cm/sec
- Speed tolerance/error/accuracy +/- 0.012 cm/sec (0.1% of Max speed)
- Minimum Distance 0 cm
- Maximum Distance 200cm
- Distance tolerance/error/accuracy +/- 0.013 cm (0.005 inch)